

**PUNTA GORDA SAILING CLUB**  
**Spring 2012 SAILING INSTRUCTIONS**  
**Club Series Races**

**1. RULES**

- 1.1 PGSC races will be governed by the 2009-2012 Racing Rules of Sailing and by the “Class Rules” of the WF PHRF.

**2. NOTICES TO COMPETITORS**

- 2.1 These Sailing Instructions and Notices to competitors will be posted on the Punta Gorda Sailing Club website: [www.pgscweb.com](http://www.pgscweb.com).

**3. CHANGES**

- 3.1 The Race Management Committee may modify these sailing instructions by publication on the Club website. Such notification should occur at least one week before the effective date.

**4. RACING SCHEDULE**

- 4.1 Races for each Series Race will begin at the time shown in the Series Notice of Race at [www.pgscweb.com](http://www.pgscweb.com). Any change to the starting time will be published on the Club website and/or via e-mail to the competitors at least one week prior to the event.
- 4.2 The schedule on 12-29-2011 is : 1/29 and 2/12 warning signal at 1055 hrs and 2//19, 2/26, 3/11, and 3/18 warning signal at 1255 hrs.

**5. ELIGIBILITY AND RATINGS**

- 5.1 This race series is open to owners and/or skippers who are currently full members of the Punta Gorda Sailing Club also all other area Yacht, Sail and Fleet Clubs.
- 5.2 Each participating boat must have on board a member of good standing of their respective area Yacht, Sail and Fleet Club. If the skipper of record is not aboard, the club member responsible must be identified to the Race Committee at the time of check-in.
- 5.3 Each participating boat must have a current West Florida PHRF rating certificate on file with the Racing Fleet Captain.
- 5.4 A two race only PGSC-issued provisional rating will be allowed in lieu of a WF PHRF certificate for first-time racers. This is an interim rating only for boats intending to obtain a WF PHRF rating. Series place will be calculated from WF PHRF rating. All results before final scoring are considered preliminary.
- 5.5 Equipment changes affecting the speed of the boat and/or the current rating must be reported to the Racing Fleet Captain and to the West Florida PHRF for appropriate handicap adjustment before the boat competes in races. Failure to do so could result in disqualification.

**6. SAFETY**

- 6.1 Boats participating in these races must be equipped in compliance with USCG requirements.
- 6.2 PGSC will not start a race when, in the judgment of the Race Committee or the Racing Fleet Captain, sustained winds exceed 20 knots. Races will not be conducted during Hurricane Watches. The decision to race or retire from a race rests with the individual skipper.
- 6.3 Each boat must carry a VHF radio capable of receiving and transmitting on channel 71.
- 6.4 The Race Committee will monitor VHF channel 71 for safety and emergency purposes. The Signal Boat may make other announcements on VHF channel 71 as a courtesy only.
- 6.5 Each boat shall carry no less than two persons aboard when racing.

**7. FLEETS & MINIMUM PARTICIPATION TO QUALIFY FOR A FLEET**

- 7.1 The Racing Fleet Captain will establish racing fleet assignments. These may include spinnaker, non-spinnaker, cruising, and multihull fleets. Fleets may be subdivided into smaller groups or combined into larger groups at the discretion of the Racing Fleet Captain. There should be a minimum of five (three for the multihull fleet) entrants (or three in a sub-fleet) to qualify as separate scoring for the series. Reassignment of fleets to comply with the minimum participation requirements shall be determined by the Fleet Racing Captain prior to the first race of each series.

**8. IDENTIFICATION**

- 8.1 All boats participating in races must have large legible identification numbers displayed on their mainsail.
- 8.2 Each entered boat will be provided with a colored pennant or ribbon denoting its racing fleet assignment. This pennant must be flown at the race start.
- 8.3 Prior to the first start, each participant shall approach the Race Committee Signal Boat on starboard tack with mainsail hoisted and showing boat number and give its name, sail number and number of people aboard, and receive acknowledgment from the Race Committee.

**9. RACECOURSE DETERMINATION AND RADIO COMMUNICATION**

- 9.1 A listing of Charlotte Harbor Markers, with distance and compass headings and a description of temporary/inflatable buoy racecourses accompany these Instructions.
- 9.2 The Race Committee may, at its discretion, set a non-listed racecourse including Charlotte Harbor Markers and/or temporary/inflatable buoys.
- 9.3 Different racecourses may be displayed for the different fleets. When so described, the fleet or the fleet's flag color will be included with the racecourse number or racecourse description.
- 9.4 The racecourse number(s) or description of the racecourse(s) to be sailed will be displayed on the stern or side of the Race Committee Signal Boat prior to the warning signal.
- 9.5 The Race Committee may announce the race course via VHF radio on Channel 71, as a courtesy only..

**10. STARTING AND FINISHING LINES**

- 10.1 The Starting Line will be between the orange flag displayed on the Race Committee Signal Boat at the starboard end and the Charlotte Harbor Marker or temporary/inflatable buoy designated as the Start mark at the port end.
- 10.2 The Finishing Line shall be between the orange flag displayed on the Race Committee Signal Boat and the Charlotte Harbor Marker or temporary/inflatable buoy designated as the Finish mark.
- 10.3 The Race Committee may tether a buoy to the stern of the Race Committee Signal Boat. This buoy and its tether shall be considered as part of a starting mark.
- 10.4 A boat that touches the Race Committee signal boat serving as a starting mark, and causes damage, shall retire. This changes Rule 31.2. A tethered buoy shall be considered an ordinary mark for this purpose, with the penalty for touching as published in Rule 31.2.

## **11. STARTING SEQUENCE AND SIGNALS**

- 11.1 Races shall be started in accordance with Rule 26, with a warning signal 5 minutes before each start.
- 11.2 The starting order will shown on the fleet assignment "scratch" sheet. The scratch sheet will be posted on [www.pgscweb.com](http://www.pgscweb.com) and will be updated as changes occur. The Race Committee may choose to alter the order of fleet starts or may combine starts by use of the signals designated in Rule 26. Such changes may be announced, as a courtesy only, by VHF radio prior to the warning signal for the affected start(s).
- 11.3 A series of sound signals may be made as a courtesy about one minute prior to the warning signal for the first fleet.
- 11.4 A boat starting later than ten (10) minutes after its starting signal may be scored DNS by the Race Committee, without further hearing. This changes rule 35, A4.1, and A5.
- 11.5 Boats whose warning signal has not been made shall keep clear of the starting area and of all boats whose warning signal has been made. The Starting Area will extend 200 feet perpendicularly (to windward & leeward) from the starting line and 200 feet radially from its ends. Boats that fail to abide by these restrictions may be subject to protest by the Race Committee only.

## **12. INDIVIDUAL RECALL**

- 12.1 The Race Committee may attempt to notify the boat or boats being recalled by hailing or broadcasting the sail number and/or name. Failure of a boat to see or hear recall notification or the timing and order of such hails will not be grounds for redress.

## **13. TIME LIMIT**

- 13.1 The time limit for the first boat in each fleet to finish each race will be 180 minutes.
- 13.2 Boats failing to finish within 60 minutes after the first boat in their fleet finishes or within the time limit, whichever is later, will be scored Time Limit Expired (TLE) and will receive two points more than the last boat to finish within the time limit. This changes Rules 35 and A 4.1.

## **14. BOAT WITHDRAWAL**

- 14.1 Any boat withdrawing from a race must notify the Race Committee and receive acknowledgment, by radio on VHF channel 71, or by other means.

## **15. SIGNALS MADE ASHORE**

- 15.1 There is no provision for signals made ashore.
- 15.2 The Fleet Racing Captain or the Principle Race Officer may cancel or postpone a race early in the race day before the Race Committee Signal Boat has left its dock. Any such decision will be broadcast over VHF Channel 71 approximately 60 minutes before the scheduled time of the first start that day.

## **16. MAKE-UP RACES**

- 16.1 A make-up race for any race abandoned, canceled or postponed shall be open to all entrants whether or not they sailed in the original race.
- 16.2 A make-up race may be held on a designated make-up race date or on the same day of any subsequently scheduled race in the series. Suitable notice for rescheduling a make-up race shall be given to all registered skippers. For scoring purposes, the order of races will be the order actually sailed, regardless of the original schedule.

**17. SCORING**

- 17.1 The Low Point Scoring System of Appendix A of the Racing Rules of Sailing will apply.
- 17.2 Time-on-Distance scoring will be used in scoring all races. Corrected times will be computed to the nearest second. Any ties resulting from rounding to the nearest second will remain unbroken in the scoring for that race.
- 17.3 For purpose of scoring a long series under Appendix A9, the number of boats entered in the series will be the number that are properly registered at the scheduled time of the second race.
- 17.4 Boats registering later than the scheduled time of the second race will be scored in individual races as a courtesy only. Any such scores will not be included in the series totals in any manner.
- 17.5 Six races are planned for the Spring Series. One completed race will constitute a series.
- 17.6 A boat's score will be the total of her individual race scores, less the worst scores excluded as follows:

Races Completed	Number of scores to be excluded
6	2
5	1
4 or less	0

This modifies rule A2

- 17.7 Preliminary race results will be posted on the Club's web site as soon as possible after the race. Final results will be issued at Series end.

**18. TROPHIES**

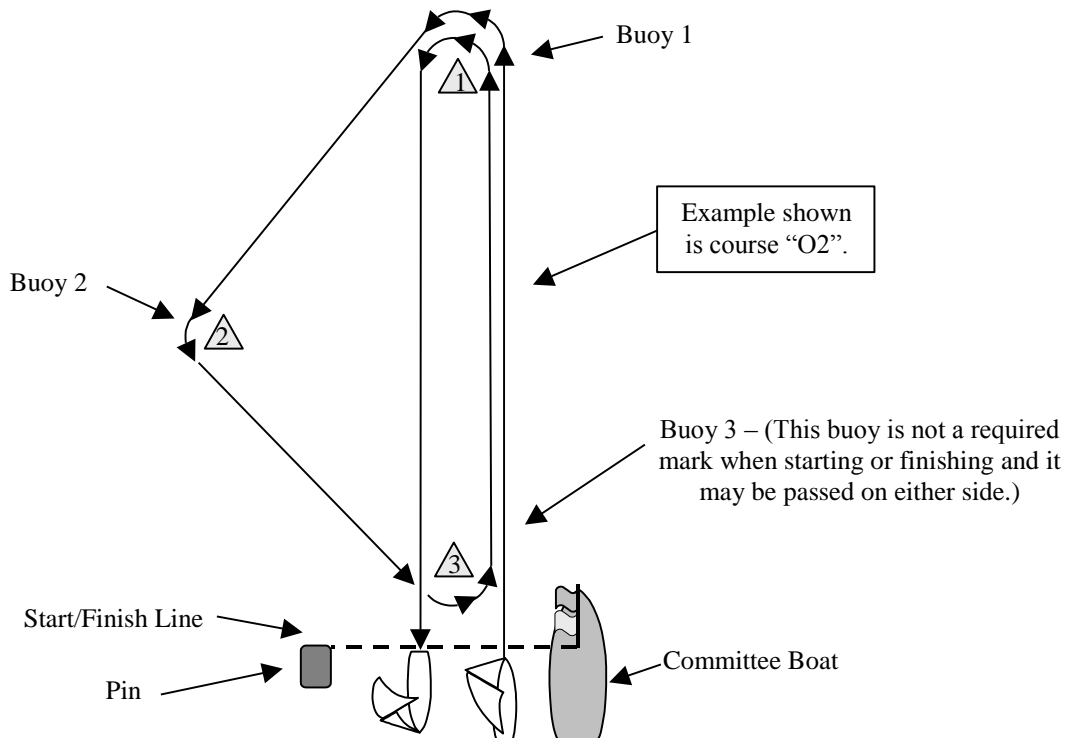
- 18.1 To be eligible for an award, a boat shall be entered prior to the scheduled second race of a series.
- 18.2 Trophies for series races shall be awarded to eligible contestants on the basis of the number of boats registered in each fleet or division as follows: 3 boats, one trophy; 4-6 boats, two trophies; 7-9 boats, three trophies, 10-13 boats, four trophies; 14 or more boats, five trophies. Additional awards may be made at the discretion of the Fleet Racing Captain and the Race Management Committee.

**19. PROTESTS AND REQUEST FOR REDRESS**

- 19.1 At the finish of the race or after withdrawal from the race, a boat lodging a protest shall immediately inform the Race Committee of the name and sail number of the boat being protested and/or the skipper of the boat being protested.
- 19.2 Not later than 7:00 PM on the day of the race, the protesting boat shall deliver to the Vice Commodore or Fleet Racing Captain a written protest, conforming to Rule 61.2.
- 19.3 A boat requesting redress under rule 62 shall make the request in writing and deliver it to the Vice Commodore or the Fleet Racing Captain not later than 7:00 PM the day after the official results are posted. The notice may be by phone 941-773-6326 and the written request via e-mail to [pwboats@aol.com](mailto:pwboats@aol.com).

# ATTACHMENT 1

## Inflatable Buoy Race Courses



<u>Course W2</u>	<u>Course W3</u>	<u>Course O2</u>	<u>Course O3</u>	<u>Course T1</u>	<u>Course T2</u>	<u>W1</u>
Start	Start	Start	Start	Start	Start	Start
Buoy 1	Buoy 1	Buoy 1	Buoy 1	Buoy 1	Buoy 1	Buoy 1
Buoy 3	Buoy 3	Buoy 2	Buoy 2	Buoy 2	Buoy 2	Finish
Buoy 1	Buoy 1	Buoy 3	Buoy 3	Finish	Buoy 3	
Finish	Buoy 3	Buoy 1	Buoy 1		Buoy 1	
	Buoy 1	Finish	Buoy 2		Buoy 2	
	Finish		Buoy 3		Finish	
			Buoy 1			
			Finish			

All marks are to be left to **Port**

## ATTACHMENT 2

### Charlotte Harbor Government Mark Race Courses: 2010

Course	Wind Dir	Start	Course Marks	Distance(NM)
<b>A</b>	<b>Variable</b>	<b>SB</b>	<b>Variable</b>	<b>Variable</b>
<b>B</b>	<b>275°-285°</b>	<b>1</b>	<b>7(p)-1</b>	<b>2.54</b>
<b>C</b>	<b>275°-285°</b>	<b>1</b>	<b>7(s)-B(s)-1</b>	<b>3.4</b>
<b>D</b>	<b>25°-35°</b>	<b>1</b>	<b>2(p)-1</b>	<b>4.2</b>
<b>E</b>	<b>275°-285°</b>	<b>1</b>	<b>7(s)-2(s)-1</b>	<b>6.27</b>
<b>F</b>	<b>205°-215°</b>	<b>2</b>	<b>1(s)-7(s)-2</b>	<b>6.27</b>
<b>G</b>	<b>205°-215°</b>	<b>2</b>	<b>1(p)-2</b>	<b>4.2</b>

#### Notes:

- 1. SB = signal(committee) boat; (s)=starboard rounding; (p)=port rounding**
- 2. Racecourse A:** The start and finish will be at the signal boat-orange buoy pin line. There may be set a yellow tetra buoy in the vicinity of the signal boat to be used as a turning mark. The signal boat will locate the starting line so that the first leg is run upwind to a government mark.
- 3. Racecourse C:** All four markers or floating mark signified by B must be left to starboard.
- 4. A Racecourse using other government marks or navigation aides not listed above may be set (see Sailing Instruction 9.2).**

## ATTACHMENT 3

### Charlotte Harbor NAVAIDs used as Race Marks

Distance (Nautical Miles) & Heading (Magnetic 2009)

From Mark	To Mark								
	1	2	3	3A	4	A	B	T	7
1		2.14 030°	2.97 040°	Not Used	Not Used	2.88 026°	0.95 342	3.91* 045°	1.27 279°
2	2.14 210°		0.93 063°	1.59 079°	2.11 082°	0.77 014°	1.68 235	1.92 061°	2.86 235°
3	2.97 220°	0.93 243°		0.74 97°	1.26 096°	0.76 297°	2.60 238	.98 057°	3.78 237°
3A	Not Used	1.59 259°	0.74 277°		0.52 094°	1.70 290°	3.20* 247	0.70 010°	4.37 244°
4	Not Used	2.11 262°	1.26 276°	0.52 274°		1.98 284	3.68* 250	0.81* 328°	Not Used
A	2.88 206°	0.77 194°	0.76 117°	1.48 108°	1.980 104°		2.28 223	1.51 082°	3.45 227°
B	0.95 206	1.68 055	2.60 058	3.20* 067	3.68 070	2.28 043		3.57 058	1.18 2.34
T	3.91* 225°	1.92 237°	0.98 237°	0.64 188°	0.81* 148°	1.51 262°	3.57 238		4.76 238°
7	1.27 99°	2.86 055°	3.78 057°	4.37 064°	Not Used	3.45 047°	1.18 054	4.76 057°	

Markers A & T are yellow floating cans.

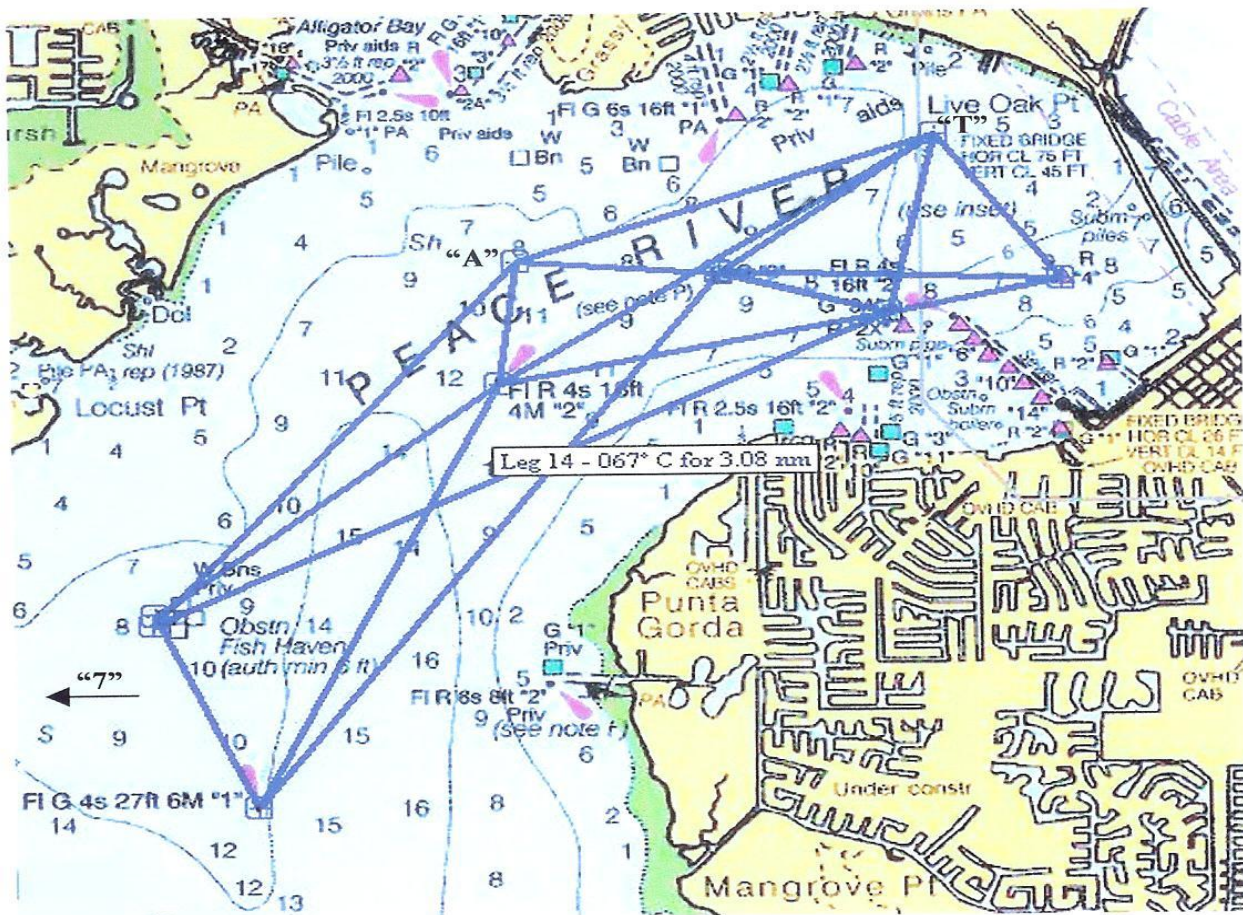
Marker B (fishing structure) may be a floating mark

\*These legs should not be used during low water conditions.

Distances and headings updated for relocation of mark 3A. (Aug 08)

Distances and headings updated for relocation of mark A& T. (12/2011)

## GPS Coordinates Punta Gorda Sailing Club Race Marks



### Race Marks GPS Coordinates:

#### Government navigation aids:

Mark 1	26 53.97N	82 07.24W
Mark 2	26 55.90N	82 06.20W
Mark 3	26 56.38N	82 05.31W
Mark 3A	26 56.34N	82 04.48W (updated 2008 per Notice to Mariners)
Mark 4	26 56.35N	82 03.90W
Mark 7	26 54.09N	82 08.68W

#### Other marks used:

Mark A	26 56.66N	82 06.10W (yellow can) (updated Dec 11)
Mark T	26 56.99N	82 04.45W (yellow can) (updated Dec 11)
Mark B	26 54.84N	82 07.65W (fish haven)

(Coordinates for Mark B are to the approximate NW corner of fish haven. All four pilings must be rounded.)

Coordinates have been copied from various charts and are rounded off.

Use them at your own risk.